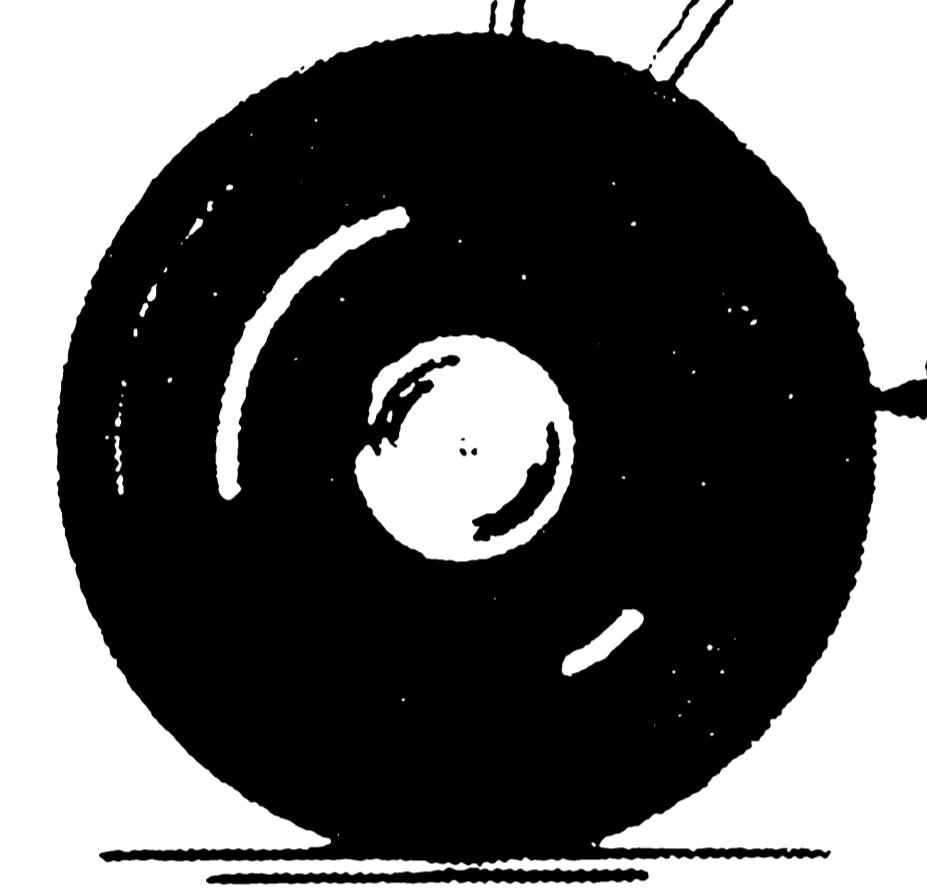


POSITION OF BATTERIES

PLANK SHADED PORTIONS WITH 1/8 X 3/8 STRIPS

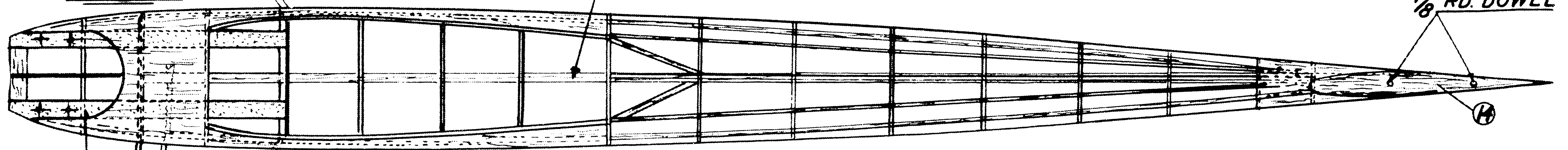
SOLID BALS



1/2" AIRWHEELS

1/2" SQ. BACKBONE

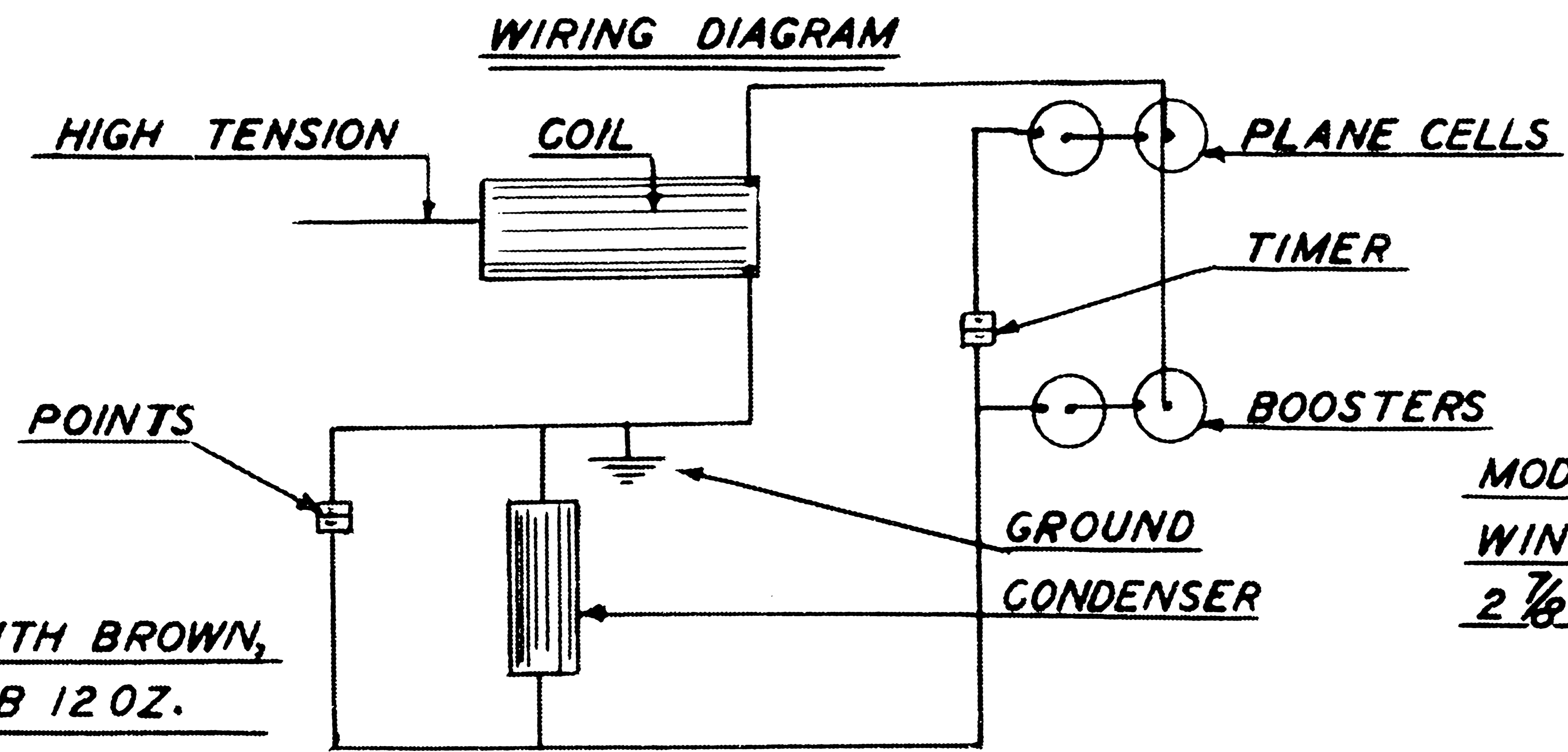
BULKHEADS A B C & D ARE CUT FROM .063 WIRE SKID  
 1/8" BIRCH PLYWOOD ALL OTHERS  
 CUT FROM 1/8" MEDIUM SHEET BALS



1/8" RD. DOWEL

MOTOR MOUNTS

LANDING GEAR PERSPECTIVE  
 NOT TO SCALE



WIRING DIAGRAM

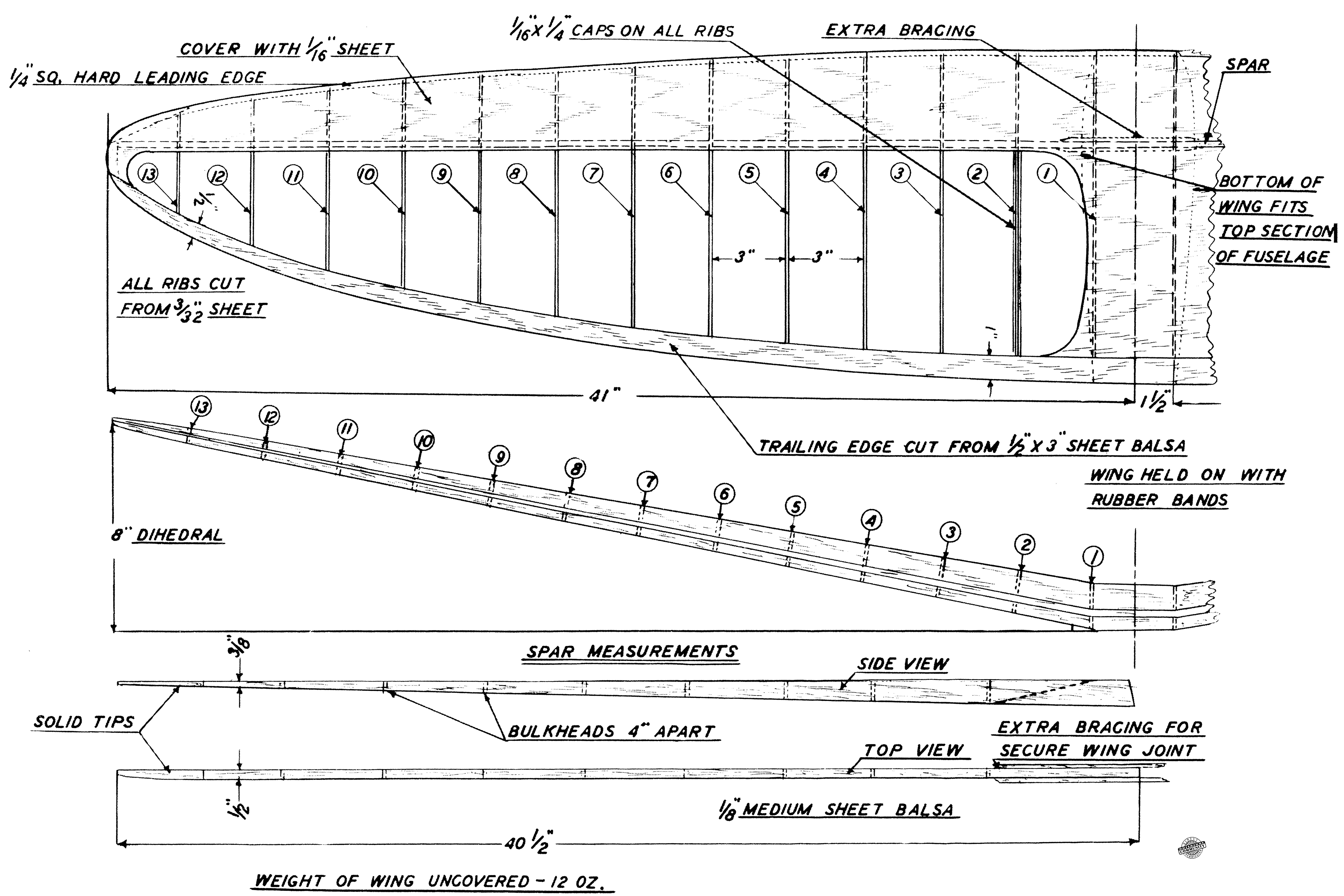
1/8" DIA. STEEL WIRE

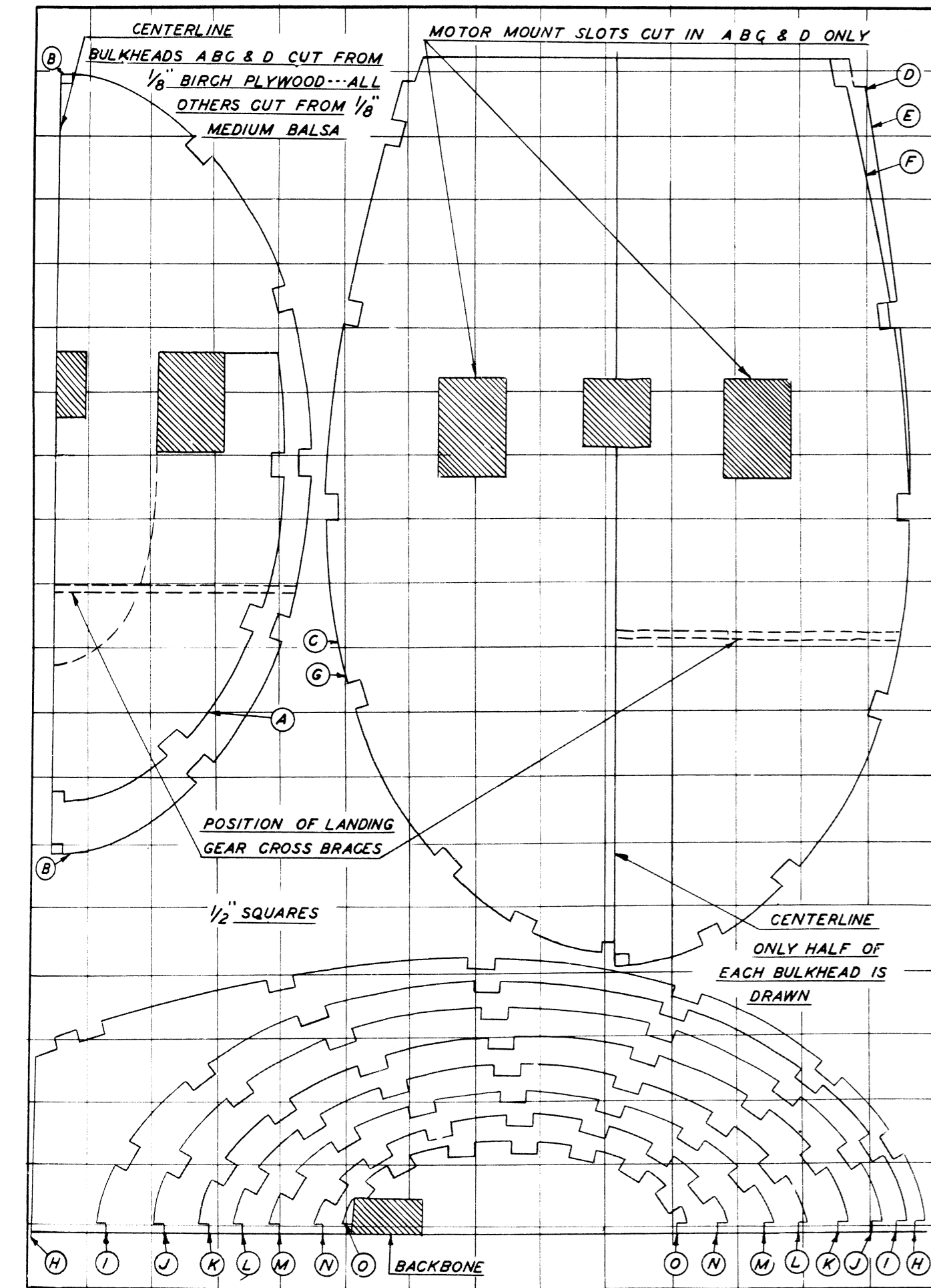
MODEL CONFORMS TO N.A.A. RULES  
 WING AREA 824 SQ INCHES - WEIGHT  
 2 7/8 LBS. WING LOADING 8 OZ.  
 SQ.FT. POWER 1/5 H.P.  
 14"-15" DIA. PROP. 8" PITCH

WEIGH OF FUSELAGE WITH BROWN,  
 WHEELS, COIL, ETC. 1 LB 12 OZ.

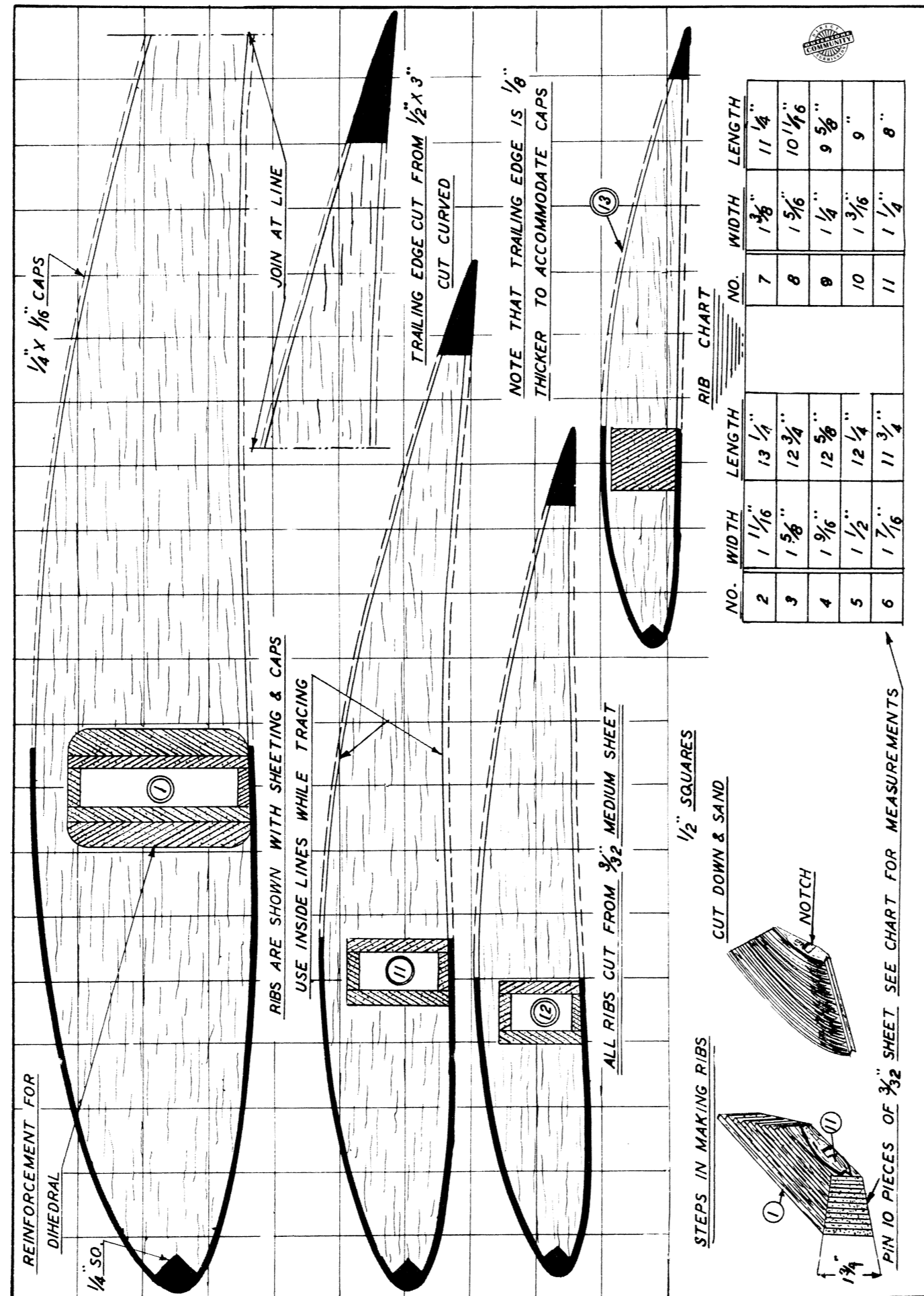
USE 2 MEDIUM SIZE OR 4 PEN-LITE BATTERIES



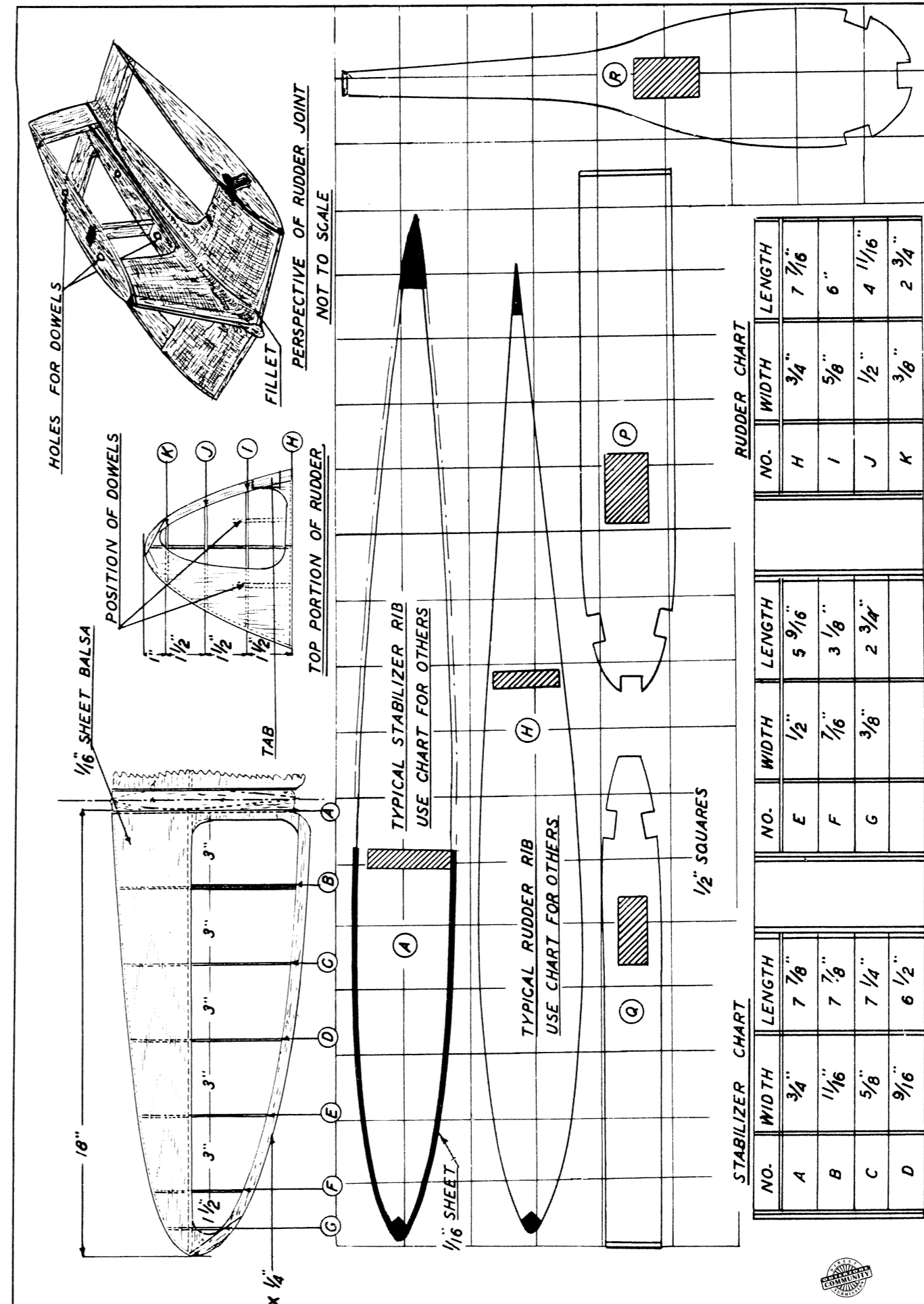




Fuselage formers should be laid out in the same manner as the ribs. Remember that each drawing represents only half of a former, but the system of squares will make it simple to duplicate second half.



Rib patterns are given above. Lay them out to exact size in the 1/2-in. squares and cut from 3/32-in. balsa by the simple method described in the text.



Details of stabilizer and rudder. After cutting typical ribs A and H to exact size and shape, make rest to dimensions shown in chart, following contours of first two.

